

DEAN'S MESSAGE



Dean Dr. Howard Hu

Summer at the DLSPH is a time of diversity in activities, time and space – periods of a more relaxed pace, enjoyment of a beautiful city's outdoor delights, and reflection – but also periods of intense activity, as our scholars catch up on their field research in Toronto and around the world. I have greatly enjoyed my first summer as a proud member of the DLSPH, both here and abroad, and I hope you are all re-charging and will be as refreshed as I am to re-engage in our first academic year as a Faculty.

What's in store for us come September? In addition to the return of our existing students and matriculation of the largest

group of entering students in our School's history (who will be taking our totally re-designed Introduction to Public Health course), a lot is underway. We are planning back-to-back student- and faculty-led symposia in late October on our Health Cities theme; accelerating collaboration and integration discussions with the Institute for Health Policy Management and Evaluation; working with the Faculty of Medicine to launch the first MD-MPH program in Canada, and with Nursing, Occupational Therapy and Physical Therapy to explore additional clinical MPH programs; launching a "Big Data" committee to harness the extraordinary opportunities we have to access and integrate large data bases for new research and training; planning our first School-wide annual Symposium for promoting new trans-disciplinary initiatives; planning new Committees to bolster our internet-based, long-distance, and continuing education offerings and increase our complement of International students; and much more. New leaders are getting settled into their new roles (e.g., our previously-announced new Associate Dean for Faculty Affairs [Ted Myers]; and new Heads of the Divisions of Social & Behavioural Health Sciences [Liviana Calzavara] and Occupational & Environmental Health [James Scott]), or arriving soon (e.g., Associate Dean for Research, Director of Communications, Director of Advancement). We are also launching five Search Committees to recruit the best faculty in the world for a suite of new tenure-track and leadership positions, and we will be welcoming this fall several new outstanding faculty members recruited to positions in the Health Program at UT-Scarborough that are specifically designed to include participation in our teaching and research programs.

CONTENTS

DEAN'S MESSAGE	1.
WHAT'S NEW & HAPPENINGS	2.
YOU SHOULD KNOW...	2.
2013 WDP SUMMER SESSION	5.
ALUMNI SPOTLIGHT	6.

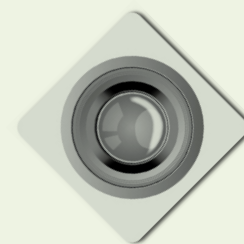
Share Your Photos!

Snap it and send it in! Send pictures of the DLSPH in action.

The Dean's Office is looking for lab, event, classroom, and field site photographs from each Division to add to our website, Facebook, and e-communications.

Photo submissions will go into a DLSPH photo library. By submitting your photograph(s) you are authorizing DLSPH to use your photograph(s)!

Send Submissions to:
dean.dlsph@utoronto.ca



This issue of the DLSPH e-Bulletin was made possible with the technical assistance of [Resource Environmental Associates Limited](#).

DEAN'S MESSAGE

faculty members recruited to positions in the Health Program at UT-Scarborough that are specifically designed to include participation in our teaching and research programs.

It's going to be busy. And it also comes with some pain. With the many new faces and initiatives, we are going into a space crunch, and we will be talking with many of you about space utilization, moving, shrinking, expanding, etc. Bear with us. These growing pains are a sign of progress, and we will surely be working on expanding our space footprint along with all of our other initiatives.

Thanks, again, to all of you for your engagement and collegiality.

See you – re-charged and refreshed – in a couple of weeks!

Howard Hu, M.D., M.P.H., Sc.D.
Dean

OPPORTUNITIES

The Dalla Lana School of Public Health currently has Assistant/Associate Professor-tenure stream positions available in Occupational and Environmental Health, Biostatistics, and Epidemiology. Click [here](#) to view each opportunity in full detail.

What's New & Happenings



The screenshot shows the website's navigation menu with links for About, New Initiatives, Divisions, Programs & Students, Research, Faculty, Events, and Alumni. A main banner features the word 'Epidemiology' over a crowd of people. Below the banner are three columns of news items under the heading 'Dalla Lana School of Public Health'. The 'WHAT'S NEW' column lists several awards and recognitions. The 'PROSPECTIVE STUDENTS' column lists application processes and funding opportunities. The 'UPCOMING EVENTS' column lists dates for various events.

To check out What's New go to:
<http://dlsph.utoronto.ca/new>

YOU SHOULD KNOW...

► Weili (Liz) Li



The thesis work of STAGE Trainee and Biostatistics PhD student Weili (Liz) Li has been accepted for an oral presentation at this year's American Society of Human Genetics Annual Meeting in Boston, Massachusetts. Liz' research, "Prioritizing sequence variants using statistical evidence: Not all measures are alike," will be presented on October 23, 2013. Congratulations Liz!

► Steven Narod

Each year, the Canadian Cancer Society honours exceptional Canadian scientists who have made a significant contribution to progress in cancer research. This year, STAGE Mentor and DLSPH Epidemiology professor Steven Narod is the recipient of the O. Harold Warwick Prize, one of four national Awards for Excellence in Cancer Research. This prize is given to scientists whose research has had a major impact on cancer control in Canada. View the full story here: <http://www.cancer.ca/en/about-us/for-media/media-releases/ontario/2013/awards-for-excellence/?region=on>.

You SHOULD KNOW... (CONT.)

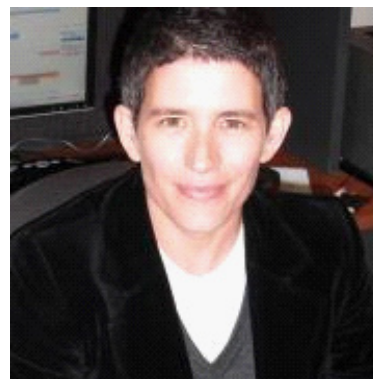
► David Soave

STAGE Trainee and Biostatistics PhD student David Soave received Graduate Studentship from The Hospital for Sick Children. These awards provide research funding for graduate students who are pursuing either a master's or doctoral degree in any basic or medical science. Congratulations David!



► Dr. Lisa Forman

Congratulations to Dr. Lisa Forman nominated principal investigator on her successful CIHR Operating Grant for "Defining the minimum core of the right to health to advance universal health coverage" a research project to develop the minimum core duties of rich and poor countries under the right to health towards essential health needs globally. This research is part of Dr. Forman's collaboration on a multinational European Commission research project to develop rights-based goals for the post-2015 health development agenda, and to advise the Commission in its participation in this process.



► Dr. Gillian Einstein

Congratulations to Dr. Gillian Einstein for receiving grants from both the Canadian Breast Cancer Foundation and the Canadian Institutes of Health Research to study cognition after ovarian removal (oophorectomy) in women with the breast cancer mutations, BRCA1 and 2.



Dr. Einstein has also been appointed by the CIHR Board of Governors, Chair of the Scientific Advisory Committee of the Institute of Gender and Health, CIHR for the term July 2013-June 2016.

► Fiona Kouyoumdjian

Fiona Kouyoumdjian, who recently completed a PHAC-funded Fellowship in Public Health and Preventive Medicine and a PhD in Epidemiology (supervisor: Liviana Calzavara), was awarded a 2013 Postgraduate Research Award: the William S. Fenwick Award. The Award will fund her retrospective cohort study of mortality in incarcerated persons in Ontario.

► Joanna Cohen

Joanna Cohen, PhD, MHSc, is an Associate Professor at the Dalla Lana School of Public Health and a Principal Investigator with the Ontario Tobacco Research Unit. She is also the Bloomberg Associate Professor of Disease Prevention



and Director of the Institute for Global Tobacco Control at the Johns Hopkins Bloomberg School of Public Health. She is Co-PI with Robert Schwartz on the CIHR Strategic Training Program in Public Health Policy. Joanna supervised or served on the committees of three DLSPH doctoral students who convoked this year: Bo Zhang, Bundit Sornpaisarn, and Michael Roerecke; she currently supervises one

DLSPH doctoral student and serves on the committees for three others. Joanna was recently appointed to the U.S. Food and Drug Administration's Tobacco Products Scientific Advisory Committee for a four year term.

You SHOULD KNOW... (CONT.)

► Dr. Carol Strike

In June, Dr. Carol Strike (Social and Behavioural Health Science Division) was selected as the inaugural winner of The Ross Upshur Thesis Mentorship Award for the 2012-13 academic year. This education award was created by the University of Toronto Joint Centre for Bioethics (JCB) in 2011 to honor Dr. Ross



Upshur's significant, lasting contributions through bioethics education. Dr. Ross Upshur, the incoming Head of Clinical Public Health at the Dalla Lana School of Public Health, was an active member of the Joint Centre for Bioethics since its inception and served as the JCB Director from 2006-2011. Dr. Upshur's talents and accomplishments span bioethics research, education, practice, and public engagement, in the area of bioethics education, He is particularly renowned is as an exemplary thesis mentor who has supervised or co-supervised scores of graduate students specializing in bioethics. The Ross Upshur Thesis Mentorship Award recognizes sustained contributions, over two years or more, to excellence as an outstanding thesis mentor and role model for graduate students.

► Anne-Emanuelle Birn



DLSPH Professor Anne-Emanuelle Birn recently received a CIHR Operating Grant (\$275,522) as lead PI --together with co-PIs, DLSPH colleagues Lisa Forman and Carles Muntaner - for a research project titled "Health Diplomacy at a Crossroads: Social Justice-Oriented South-South Cooperation in a

Time of Global Change."

► Emma Richardson

Emma Richardson and her research assistant, Hermelinda Teleguario, in Patzún, Chimaltenango, Guatemala, carried out interviews with indigenous women from rural districts, about barriers to the access and use of family planning. Emma was able to present at the Guatemalan Scholars Network conference in Antigua, Guatemala, between the 10th and 13th of July, 2013



2013 WDP SUMMER SESSION ON SOCIOPOLITICAL CHALLENGES

A HUGE SUCCESS!



The Work Disability Prevention (WDP) CIHR Strategic Training Program, directed by Professor Patrick Loisel MD, is a part-time three year program intended for PhD students, Post-Docs, and Young Researchers and includes four main educational activities: online courses, intensive in-class summer sessions focused on one of the following themes: methodological, sociopolitical, or ethical challenges, synthesis course, and optional courses. The educational activities include problem-solving, learning to address the session theme, case studies, seminars, lectures, workplace visits, knowledge mobilization activities and practicums. There are over 20 Mentors (faculty) from around the world participating as supervisors in trainee activities and often as collaborators in research activities outside of the program requirements.

In June, the WDP Program held its annual Summer Session focused on the theme of Sociopolitical Challenges. 30 post-graduate Trainees representing 14 countries, including Europe, Australia, Hong Kong, Thailand, Vietnam, and Canada, arrived and were thrown into a full-time intensive curriculum specifically developed for first, second, and third cohorts. Over 30 WDP Program Mentors and Guest Speakers representing Europe, New Zealand, US, and Canada delivered courses, lectures and several WDP Mentors took on the important role of Chair Mentor who provide guidance for and evaluation of the Trainees throughout the Summer Session.

For more information go to:

<http://www.training.wdpcommunity.org>

“the level of academic achievement demonstrated by the trainees and the increasingly growing network of international connections with faculty and trainees throughout the world just keeps getting better and better every year!”

- WDP Director Loisel

ALUMNI SPOTLIGHT



Beth Lowcock, MPH 2011
 Epidemiologist, Cancer Care Ontario

How did you become interested in your field of public health? What led you to DLSPH?

I had always wanted to pursue a career in a health-related field, but it was my experience as an intern at an HIV treatment centre in Lesotho, a small country in southern Africa, that pushed me to study public health epidemiology. In Lesotho, I worked to facilitate data collection for the monitoring and evaluation of clinic operations and the delivery of antiretroviral therapy. I became frustrated by the fact that I, myself, did not possess the skills to analyze and learn from the data we collected – and the recognition of this gap in my skill set helped me to identify epidemiology as a useful and interesting area of study. More fundamentally however, through the experience of working in an impoverished community so heavily affected by HIV/AIDS, I was fortunate to gain a deeper appreciation of both the importance of prevention in enhancing the health of individuals and populations, and the fundamental truth that health is an issue of social justice. Therefore, it was the desire to learn from a faculty of leaders in the field, and to gain the sound epidemiologic skills needed to make my own contribution to improving public health, that led me to the DLSPH.

In what ways has your DLSPH experience had an impact on your career?

Quite simply, the training I received at the DLSPH provided me with the skills necessary to obtain and succeed in a job I love. I use the skills I obtained during my MPH every day in my position, and I wouldn't be able to do what I do without them.

Was there a specific faculty member or course that was particularly influential?

I was privileged to learn from a host of fantastic faculty members, but I am particularly grateful to Dr. Laura Rosella, from whom I learned a tremendous amount. Dr. Rosella was my professor for two courses – Scientific Overviews, and Categorical Data Analysis for Epidemiologic Studies, and she was also my supervisor for a practicum at Public Health Ontario. She is a very talented teacher, and is able to effectively convey the often complicated and nuanced concepts of epidemiology. As an accomplished practicing epidemiologist, Dr. Rosella is keenly aware of the practical skills that are needed by individuals entering the field, and she is intent on instilling these skills in her students.

“I use the skills I obtained during my MPH every day in my position, and I wouldn't be able to do what I do without them.”



What have you been doing since leaving DLSPH?

Since graduating, I have worked as a Research Associate and Senior Research Associate in the Research Department, Prevention & Cancer Control at Cancer Care Ontario conducting a case-control study to investigate the association between allergies and pancreatic cancer, with Principal Investigator Dr. Michelle Cotterchio. I am now transitioning into a new position of Epidemiologist for Cancer Screening, Evaluation and Reporting. I am excited for this new challenge, and the opportunity to further utilize and expand the skills I acquired through my MPH.

Also, since graduating, I have become an active member of the DLSPH Public Health Alumni Association. I sit on the PHAA Board as Secretary, and am Co-Chair of the Mentorship Program. I have found that participating in the PHAA is a terrific way to stay connected to the School, and to continue to build relationships within this amazing network of public health leaders.

think about the skills and experiences they will gain from a particular position, rather than just the subject area. With strong skills and some experience under your belt, you will undoubtedly soon be in the perfect position to pursue your particular area of interest.

What would you say to a prospective student who is considering DLSPH?

The DLSPH has a great reputation for a host of different reasons - a diverse and highly accomplished Faculty; programs in different 'streams' of public health, such as epidemiology, health promotion and occupational & environmental health; strong connections with numerous local, provincial, federal and international public health institutions; amazing opportunities to learn 'on the job' during practicum placements; and many others. As a student at the DLSPH, you will benefit from these many opportunities that are unique to the School, and upon graduation, you will benefit from (and further contribute to) the reputation the DLSPH has established for producing very qualified, high caliber graduates.

“As a student at the DLSPH, you will benefit from these many opportunities that are unique to the School, and upon graduation, you will benefit from (and further contribute to) the reputation the DLSPH has established for producing very qualified, high caliber graduates.”

What advice would you give to current students who aspire to follow a similar career path?

While you're still a student, my advice would be to focus on developing the skills that will serve you well upon entering the work force, be they skills in statistical analysis, program evaluation, critical appraisal of literature, or others. It can be easy to get excited about a particular public health issue or topic area, but there are lots of fascinating topics in the field of public health - and having a solid set of skills will afford you the flexibility to explore different areas, and will help you sell yourself to a broader range of potential employers. In that vein, I would encourage students looking for practica, and new graduates looking for first jobs, to

Beth Lowcock received the Randall Coates Epidemiology Prize, Dalla Lana School of Public Health (2011) and a Dalla Lana School of Public Health Masters Tuition Scholarship (2009). She is a published epidemiologist with eleven publications to her name (four as first author). In addition to her role at CancerCare Ontario, Beth continues to give back to DLSPH as a devoted volunteer and champion of the Public Health Alumni Association. Her commitments include the PHAA Executive as Secretary of the Board, Co-Chair of the Alumni Spring Panel Series, and Co-Chair of the Mentorship Program Committee, in addition to serving as an alumni judge for the DLSPH Research and Practice Day, and numerous other alumni representative roles.