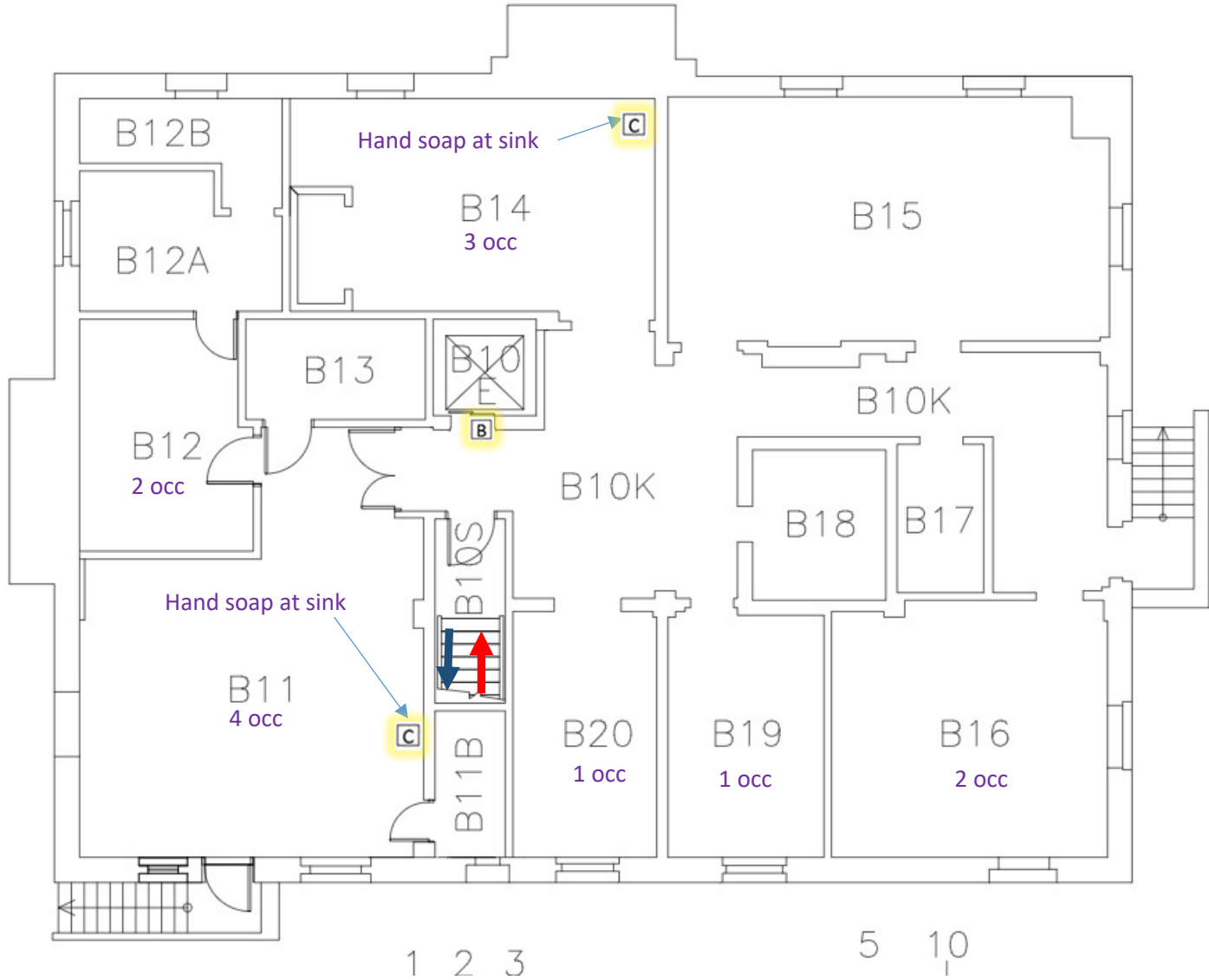
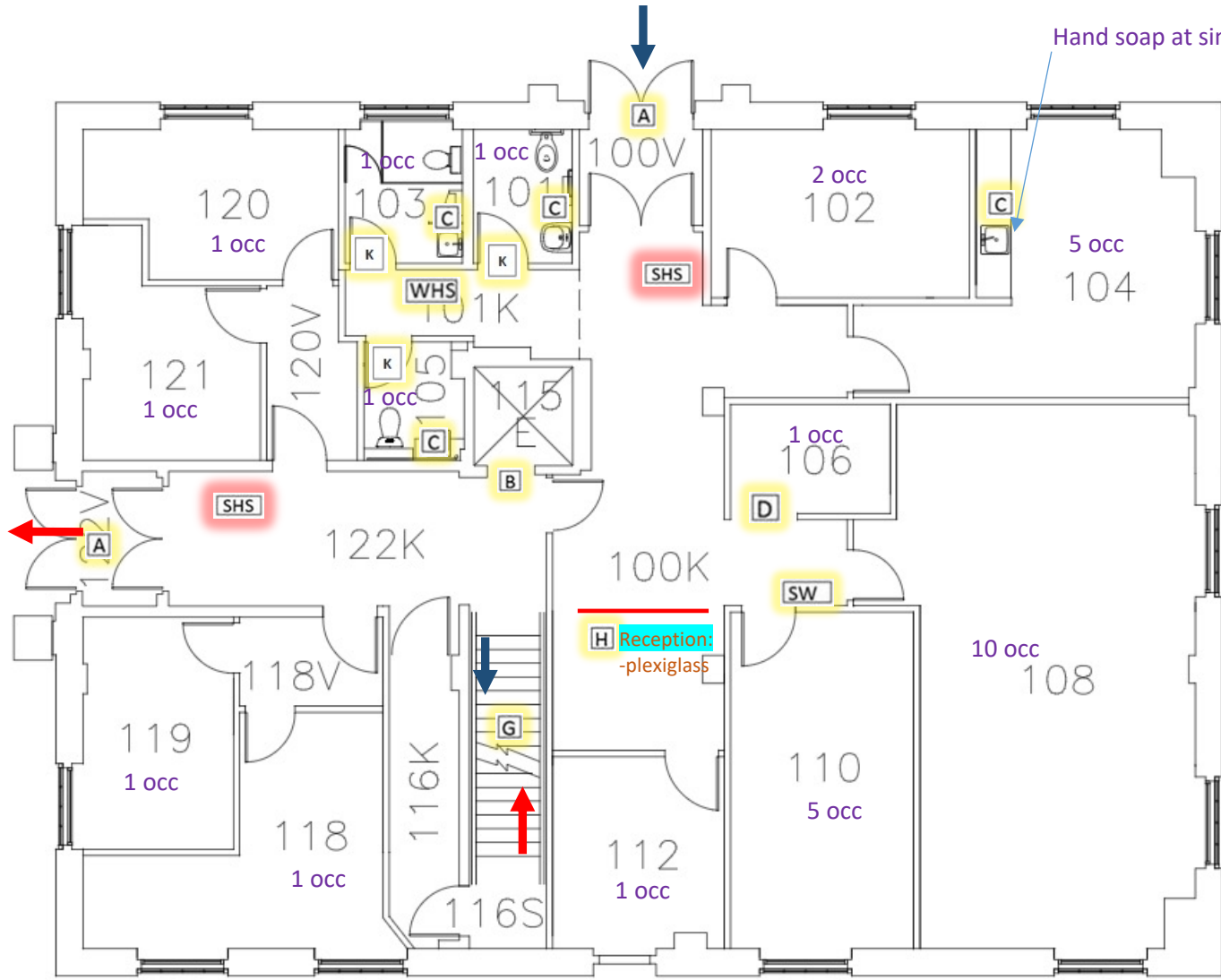


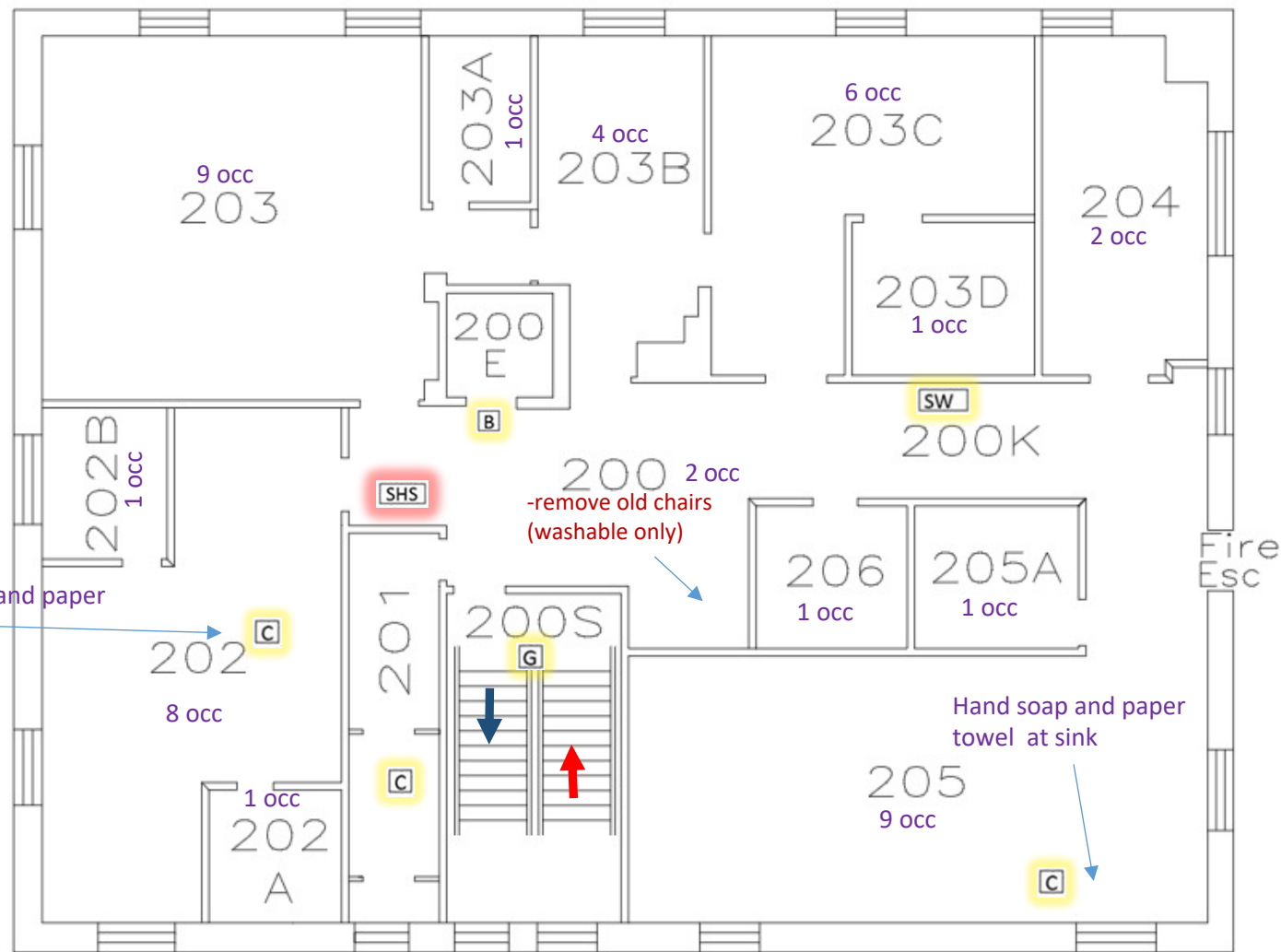
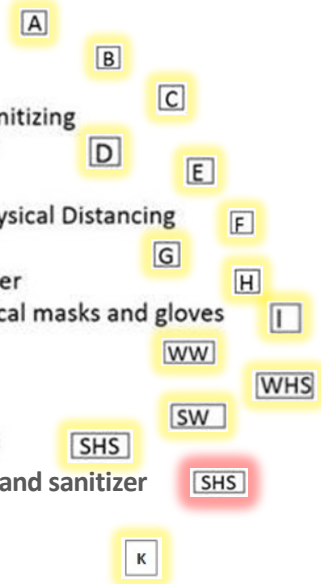
- | Poster | Description |
|---|---|
| A | Restricted-Access |
| B | Covid 19 Elevator |
| C | Covid 19 Hand-Washing and Sanitizing |
| D | Covid 19 Maximum Occupancy |
| E | Covid 19 Poster |
| F | Covid 19 Restricted Seat for Physical Distancing |
| G | Covid 19 Stairwell |
| H | Covid 19 Wait Behind the Marker |
| I | How to put on or take off surgical masks and gloves |
| WW | Wall mounted wipes |
| WHS | Wall mounted hand sanitizer |
| SW | Stand mounted wipes |
| SHS | Stand mounted hand sanitizer |
| SHS | Required – Stand mounted hand sanitizer |
| K | Washroom – Knock and Talk |
| ➔ | Directional Floor Decal – Indicating Exit |
| ➔ | Directional Floor Decal – Indicating Enter |
| | Floor Line – Indicating Separation |



- | Poster | Description |
|--------|---|
| A | Restricted-Access |
| B | Covid 19 Elevator |
| C | Covid 19 Hand-Washing and Sanitizing |
| D | Covid 19 Maximum Occupancy |
| E | Covid 19 Poster |
| F | Covid 19 Restricted Seat for Physical Distancing |
| G | Covid 19 Stairwell |
| H | Covid 19 Wait Behind the Marker |
| I | How to put on or take off surgical masks and gloves |
| WW | Wall mounted wipes |
| WHS | Wall mounted hand sanitizer |
| SW | Stand mounted wipes |
| SHS | Stand mounted hand sanitizer |
| SHS | Required – Stand mounted hand sanitizer |
| K | Washroom – Knock and Talk |
| → | Directional Floor Decal – Indicating Exit |
| ← | Directional Floor Decal – Indicating Enter |
| — | Floor Line – Indicating Separation |



- | Poster | Description |
|--------|---|
| A | Restricted-Access |
| B | Covid 19 Elevator |
| C | Covid 19 Hand-Washing and Sanitizing |
| D | Covid 19 Maximum Occupancy |
| E | Covid 19 Poster |
| F | Covid 19 Restricted Seat for Physical Distancing |
| G | Covid 19 Stairwell |
| H | Covid 19 Wait Behind the Marker |
| I | How to put on or take off surgical masks and gloves |
| WW | Wall mounted wipes |
| WHS | Wall mounted hand sanitizer |
| SW | Stand mounted wipes |
| SHS | Stand mounted hand sanitizer |
| SHS | Required – Stand mounted hand sanitizer |
| K | Washroom – Knock and Talk |
| → | Directional Floor Decal – Indicating Exit |
| ← | Directional Floor Decal – Indicating Enter |
| — | Floor Line – Indicating Separation |



Poster	Description
A	Restricted-Access
B	Covid 19 Elevator
C	Covid 19 Hand-Washing and Sanitizing
D	Covid 19 Maximum Occupancy
E	Covid 19 Poster
F	Covid 19 Restricted Seat for Physical Distancing
G	Covid 19 Stairwell
H	Covid 19 Wait Behind the Marker
I	How to put on or take off surgical masks and gloves
WW	Wall mounted wipes
WHS	Wall mounted hand sanitizer
SW	Stand mounted wipes
SHS	Stand mounted hand sanitizer
SHS	Required – Stand mounted hand sanitizer
K	Washroom – Knock and Talk
→	Directional Floor Decal – Indicating Exit
←	Directional Floor Decal – Indicating Enter
—	Floor Line – Indicating Separation

